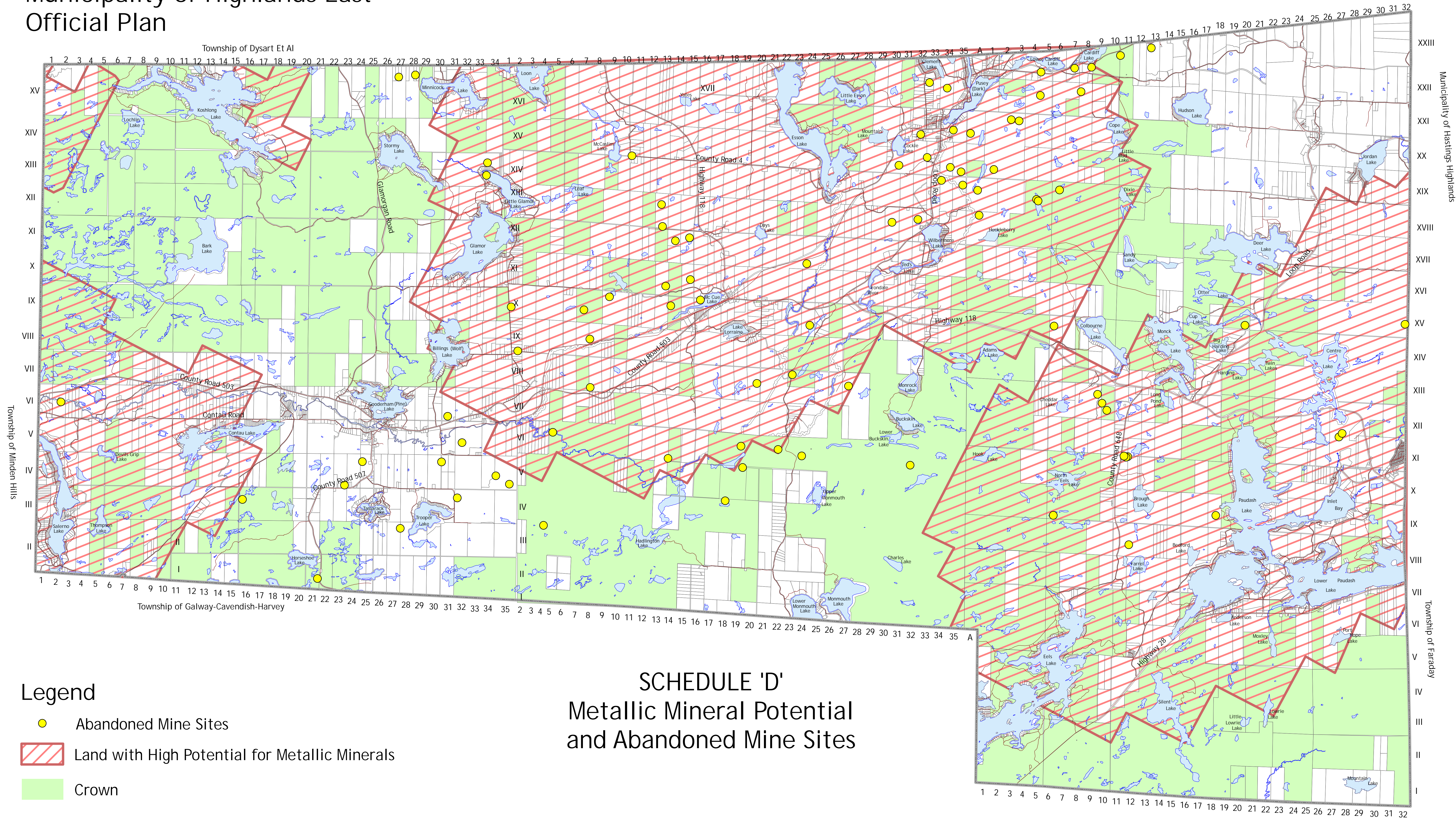


# Municipality of Highlands East Official Plan

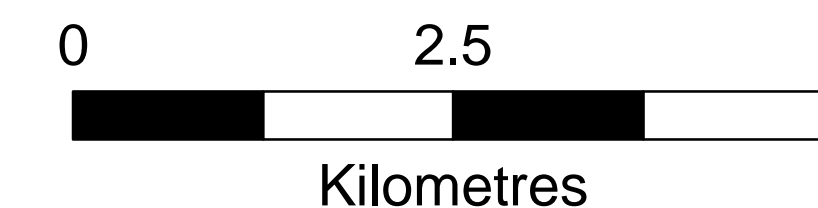
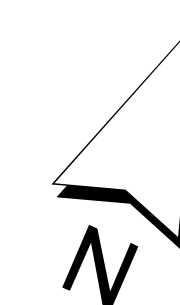


## Legend

- Abandoned Mine Sites
- Land with High Potential for Metallic Minerals
- Crown

## SCHEDULE 'D' Metallic Mineral Potential and Abandoned Mine Sites

Note: The MMPET tool is a GIS Application that provides a high level, regional scale illustration of the likelihood of any given parcel of land to be prospective for a metallic mineral resource. MMPET is not a mineral resource assessment (MRA) and does not adhere to the approved methodology for determining Provincially Significant Mineral Potential (PSMP).



February 15, 2011